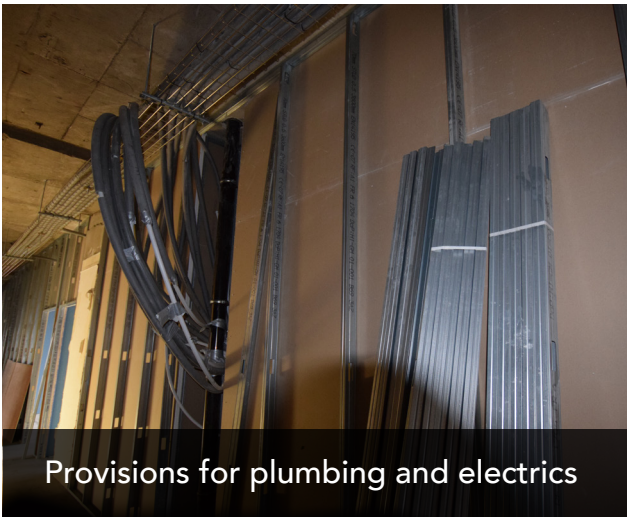


THE XCHANGE

► Construction Update
June 2017



Provisions for plumbing and electrics



Lift in full working order with slave hoist



Internal wall partitioning

Progress Report

June 2017

- Work has been progressing well since the last update in May and we are continuing to make good progress with The Xchange development.
- The safe removal of Asbestos to the external wall panels currently stands at 99% completion on all floors.
- Internal demolition and strip out is 100 % complete.
- The site now has one lift in full working order and the slave hoist is being installed.
- Waste removal is 75% complete. This has proven slightly more difficult due to the generation of a lot of dust. Operatives are now damping down the areas affected and progress is steady.
- The internal wall partitioning on floors 3, 4 and 5 is in progress.
- Ongoing work to the electric cupboards on each floor is on schedule.
- Provisions for the installation of plumbing and electrics (M & E) on the site has started and is currently at 17% completion.
- Infill voids have started on all floors - the concrete has a screed level applied which is used to level the floors and walls.

Completion Date:-



First Quarter 2018

Interested in expanding your property portfolio?

Take a look at our incredible property investment opportunities...

Victoria House Residential | Liverpool

FROM
£66,610

- Selection of studios, one and two bed apartments
- Apartments from just £66,610
- Assured NET yield 7% for 2 years*

Austin Hall & Asquith House Student | Leeds

FROM
£56,995

- Student units from just £56,995
- Assured NET yield 8% for 3 years*
- Completion imminent

*Offered by independent, third party agents and subject to their terms and conditions.

Contact us for more information:

📞 01625 464 700

✉ contact@pinnaclealliance.com

🖱 pinnaclealliance.com